



Chocolate Train

FEATURES

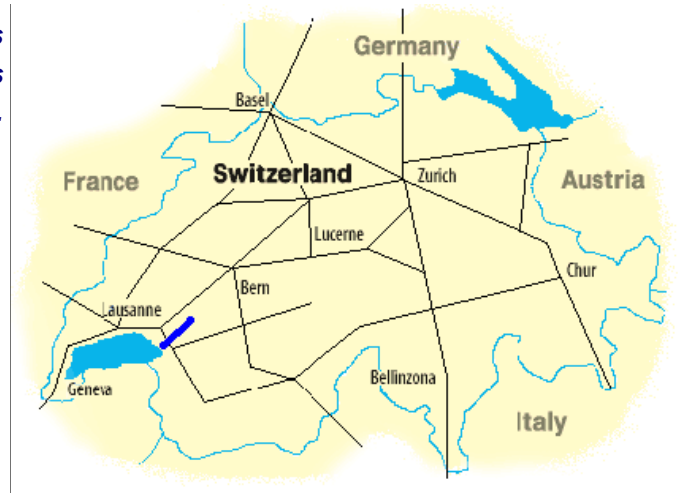
A panoramic trip from Montreux on the Swiss Riviera to Gruyères, home of the famous Gruyères cheese and the Nestlé chocolate factory. Chocolate sampling is included.

• The Swiss Chocolate Train is a joint venture between GoldenPass Services and Cailler-Nestlé. Clients ride in the comfort of 1st class, in a Pullman “Belle Epoque” carriage vintage 1915 or the ultra-modern panorama car, affording stunning views of the vineyards surrounding Montreux and medieval Gruyères. Depart Montreux on the Swiss Riviera, ascend to Gruyères, home of the famous Gruyères cheese and continue to Broc, where the chocolate factory is marvelous situated between Lake Gruyères and the Alps.

• Route: Montreux–Gruyères–Broc Fabrique-Montreux

• Service available: Every Monday ,Wednesday and Thursdays from June to October except August 1st

• The reservation fee includes:



- Seat reservation in either a Pullman “Belle Epoque” or panoramic car
- Coffee and croissants on the train
- Bus from and to Gruyères train station
- Admission into cheese factory and castle in Gruyères
- Film presentation, factory visit and chocolate sampling at the Cailler-Nestlé chocolate factory

Price List

Chocolate train	Price per person (US\$)
Seat reservation	\$ 22

Valid from 01/01/07 to 12/31/07, subject to change

- Valid from June 2007 to October 2007, subject to change
- Advanced booking: up to 90 days in advance

Traveling without a pass

- Ticket has to be paid locally (about \$50)

Train#	2118
Montreux (dep)	9h34
Gruyere (arr)	10h45

Gruyere (dep)	14h09
Broc Fabrique (arr)	14h31

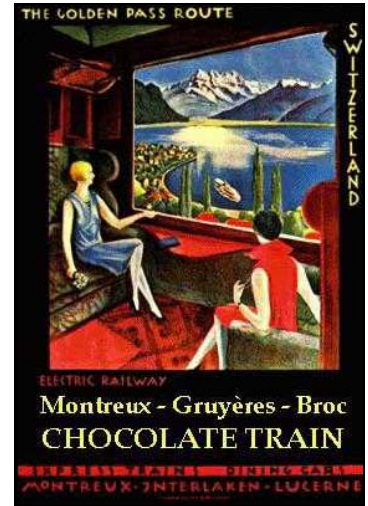
Broc Fabrique (dep)	15h50
Montreux (arr)	17h52

Visit Gruyere and its castle, the cheese factory, free time for lunch (not included)

Film presentation, factory visit and chocolate sampling

The entire trip Montreux - Broc and return is covered by the following **1st class** passes:

- Swiss Pass
- Swiss Flexi Pass
- Swiss Youth pass
- Eurail Switzerland 'n Austria Pass
- Eurail France 'n Switzerland Pass
- Eurailpass
- Eurail Selectpass (incl. Switzerland)



Traveling with any of the above mentioned passes in 2nd class

- 1st class upgrade for the trip from Montreux to Broc has to be paid locally

Refund policy

- For tickets and passes, please refer to the relevant fact-sheet
- **Reservation fees are not refundable.**

Euro Railways
The Easiest Way to Discover Europe



www.eurorailways.com
Phone: 1-866-768-8927
International Phone: 1-954-509-0601
E-mail: callcenter@eurorailways.com
1611 NW 91st Ave
Suite 321
Coral Springs, FL - 33071

Seat reservation for the Chocolate Train is compulsory and additional for all passengers.

Layout of cars

Chocolate Train and Belle Epoque Cars

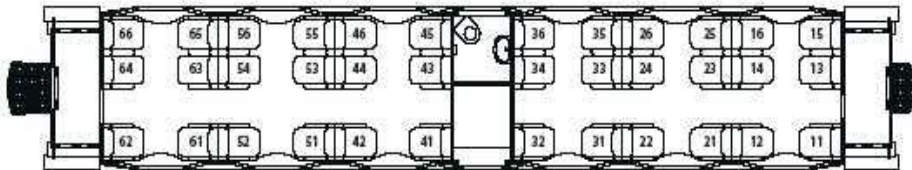
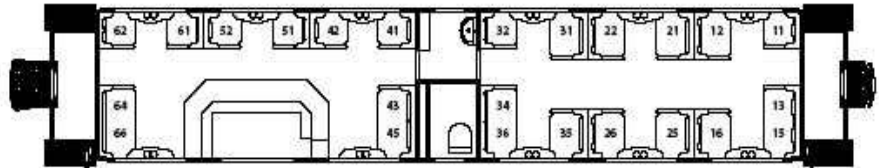


« Montreux



Broc »

Car 10 Belle Epoque
1st class 24 places
(Ars 101)



Car 11 Belle Epoque
1st class 36 places
(As 102)

Car 12 Panoramic
1st class 32 places
(As 116)

